

Interactions between Human Activities and the Structure and Functioning of Wetland Ecosystems

Jan Květ^{1,3}, Hana Čížková², Martina Eiseltoová⁴
and Jan Pokorný⁵

¹ *University of South Bohemia, Faculty of Science, České Budějovice, Czech Republic*

² *University of South Bohemia, Faculty of Agriculture, České Budějovice, Czech Republic*

³ *Czech Academy of Sciences, CzechGlobe, Center for Global Change Research, Brno, Czech Republic*

⁴ *Crop Research Institute, Praha 6 – Ruzyně, Czech Republic*

⁵ *Enki, o.p.s., Třeboň, Czech Republic*

Crucial question:

What is the “wise use of wetlands” postulated by the Ramsar Convention?

- **Wise use = sustainable management = long-term maintenance of wetland ecosystem services**
- Examples discussed:
- **I. Fishponds and their reed-dominated littoral zones (= reed belts formed by helophytes)**
- **II. Mires (= bogs and fens)**
- **III. Wet grasslands in inundation areas of fishponds and in floodplains**
- **IV. General evaluation: wetland functioning as the basis of wetland ecosystem services**

I. Fishponds and their reed-dominated littoral zones

Production ecology of fishponds and their littoral zones. Studied within the IBP (1965-74) and UNESCO's MaB program (since 1976)



Reed decline in fishpond and lake littoral zones. Studied within two EUREED EU Projects (1993 - 1998)

WHAT IS A FISHPOND ?

An artificial shallow water reservoir used for fish production, with the possibility of a complete and periodical drawdown.

MAIN FISH SPECIES REARED IN CENTRAL EUROPEAN FISHPONDS:

Common carp (*Cyprinus carpio*) 88 %

(17 000 tons per year in the C.R.)

Grass carp (*Ctenopharyngodon idella*) plus

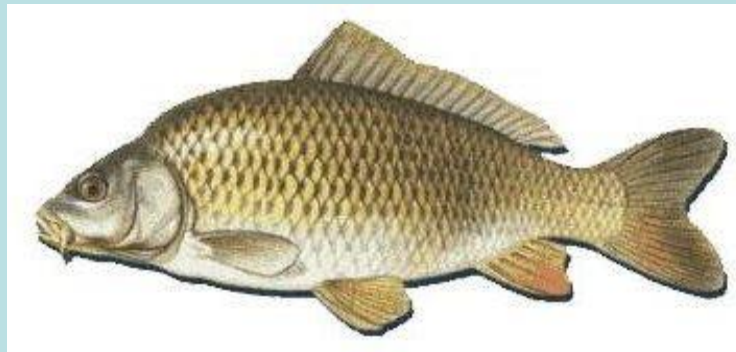
Silver carp (*Hypophthalmichthys molitrix*) 4 %

Tench (*Tinca tinca*) 1 %

Pike (*Esox lucius*)

Pikeperch (*Sander lucioperca* = *Stizostedion l.*)

Catfish (*Silurus glanis*)



Common carp – market size about 40 cm

FISH HARVEST

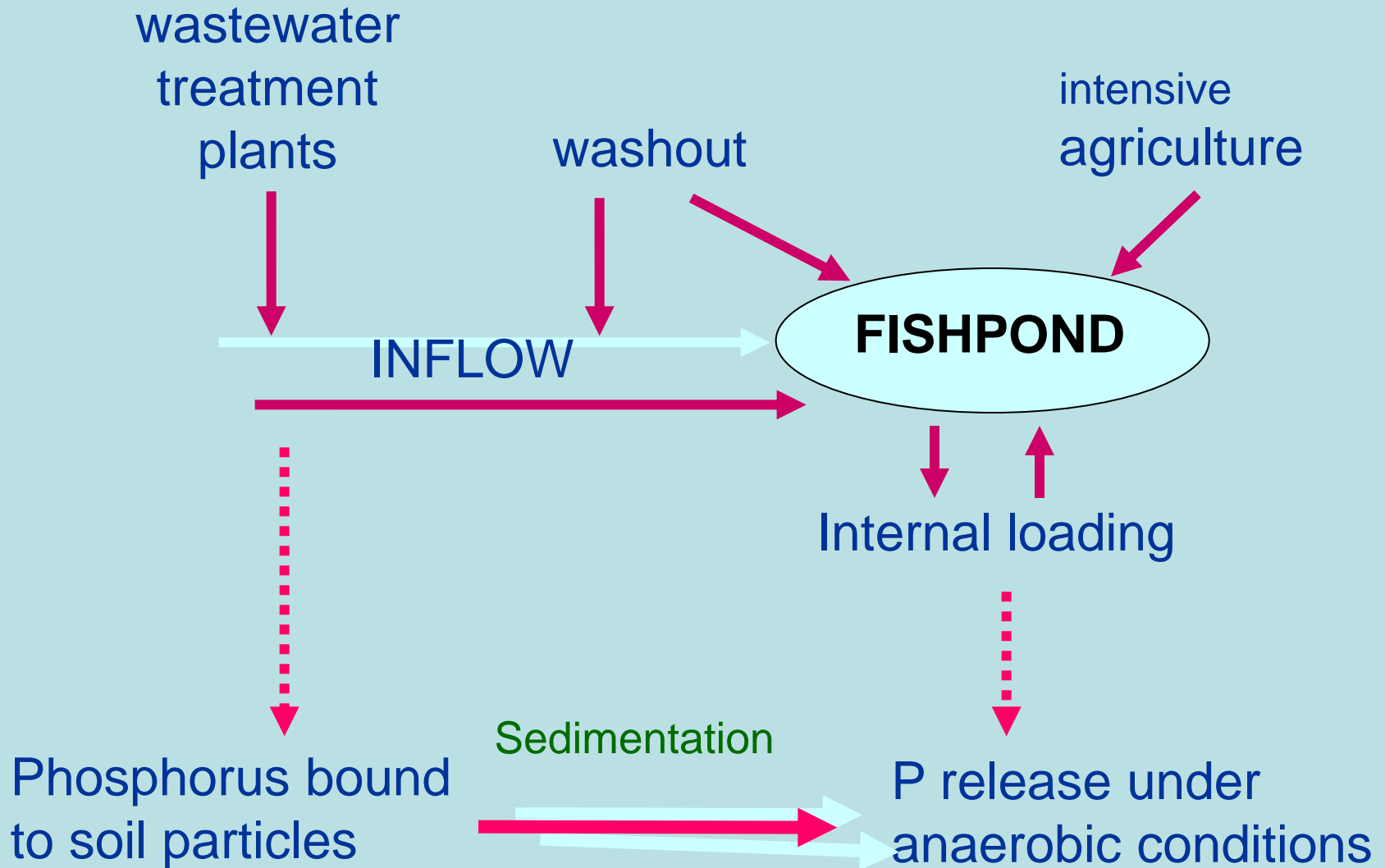


DEVELOPMENT OF FISHPOND MANAGEMENT in the present Czech Republic

| Period | Area <i>thous. ha</i> | Production <i>Kg.ha⁻¹</i> |
|------------------------|--------------------------|---|
| 12 th cent. | unknown | |
| 14 th cent. | 75 | 40 |
| 16 th cent. | 180 | 40 |
| 18 th cent. | 79 | 30 |
| 1850 | 35 | 25 |
| 1924 | 44 | 81 |
| 1956 | 50 | 137 |
| 1965 | 50 | 210 |
| 1975 | 51 | 328 |
| 1985 | 52 | 393 |
| 1995 | 52 | 423 |



HYPER-EUTROPHY OF FISHPONDS



Water bloom of *Microcystis* (Cyanobacteria) (Opatovický fishpond, August 19, 2002)



BIODIVERSITY DECLINE IN FISHPONDS

Increased intensity
of fish farming
=
Biodiversity
decline



Plants of clean water → Ruderal plants

High fish feeding pressure → Benthos decline

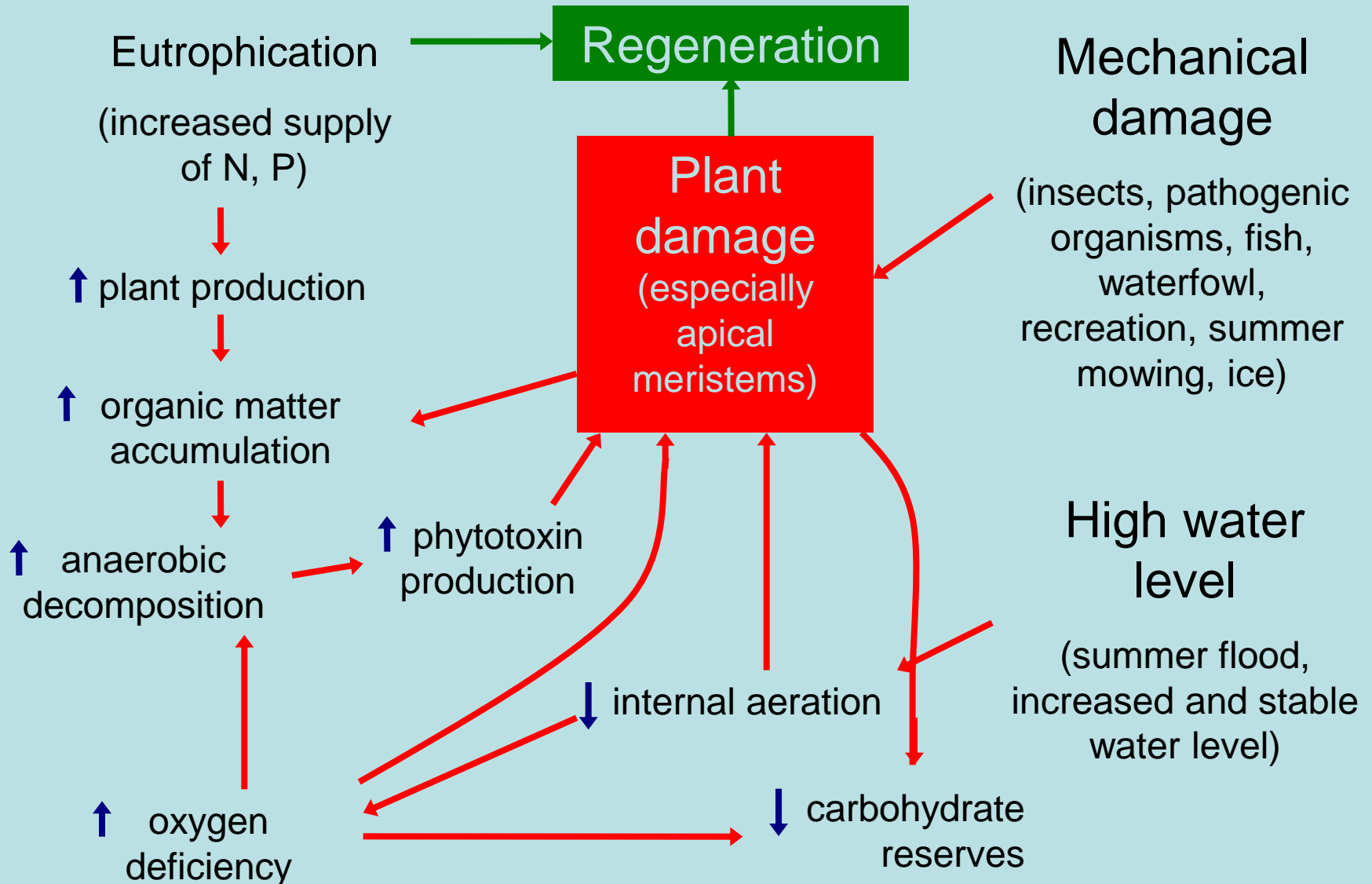
Decline of bird species richness

Reed decline in hyper-eutrophic habitats



**Littoral of Rožmberk fishpond
(western shore), South
Bohemia, Czech Republic**

Factors affecting reed decline



Properties of flooded soils

Flooding of soil pores:



- 1. Oxygen deficiency**
- 2. Toxic products of microbial metabolism:**
 - Reduced iron and manganese,
 - Hydrogen sulphide
 - Organic acids, etc.



Reed root systems in:

Oligotrophic habitat



Photo A. Soukup

Hyper-eutrophic habitat



Photo A. Soukup

Metabolic pathways:

With oxygen

Without oxygen

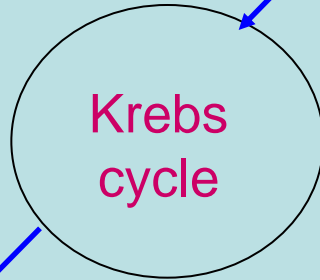
Carbohydrates(sucrose,starch)



hexose-P



pyruvate



Krebs
cycle

acetaldehyde+CO₂

ethanol

Ethanolic
fermentation

Aerobic respiration

Reserve carbohydrates - essential for survival under anoxic or anaerobic conditions

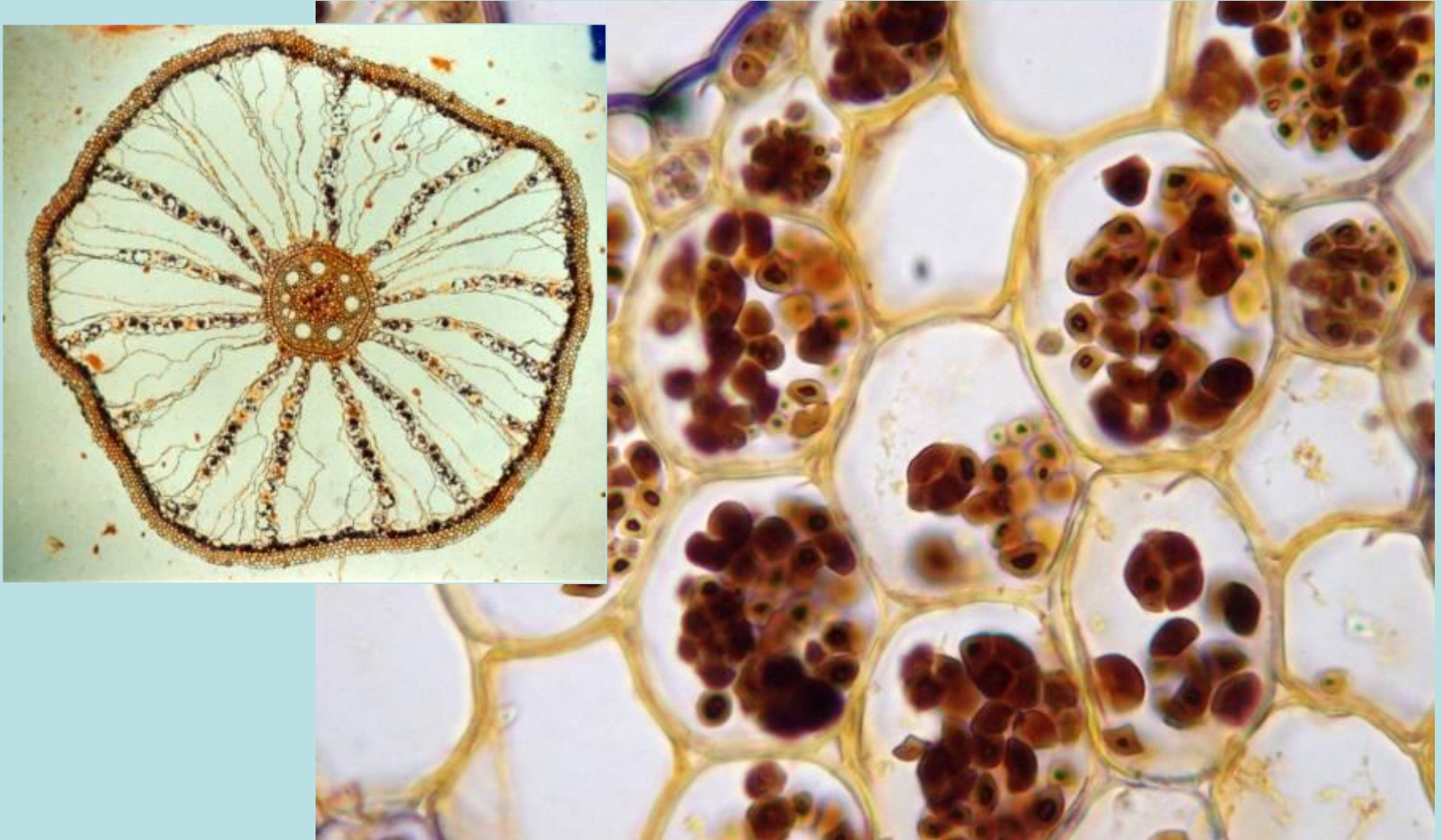
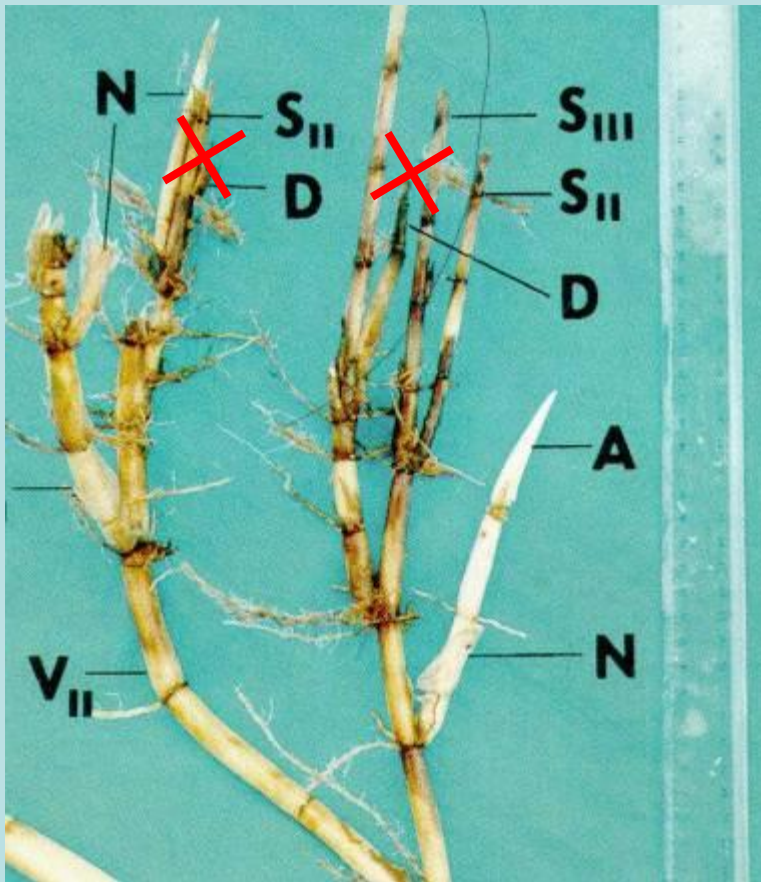


Photo A.Pecháčková

The weakest point: damaged apical meristems



Management supporting the growth of reed stands in fishpond littoral zones:

- **Partial drawdown at any time(= smaller risk of oxygen deficiency)**
- **Complete drawdown in the growing season (= substrate oxidation)**
- **Lower fish stock density (= smaller mechanical damage)**
- **Mechanical protection (fence) (= smaller mechanical damage)**
- **Winter cutting (= less substrate for decomposition, better light penetration in spring)**
- **Reduced runoff from surrounding agricultural land (= reduced eutrophication)**

II. Mires

Specific features: Impermeable subsoil, hence water-logging, incomplete decomposition of organic materials and peat formation.

Main types of Central European mires:



**Spontaneously regenerating bog after
peat extraction in the traditional way –
excavation of peat bricks by hand**

Photo J. Ševčík



Program of mire restoration within the “Šumava Mires” Ramsar site, Czech Rep.

➤ CONCEPT OF TARGET WATER LEVEL:

- lifting and stabilization of water table at the ± original level
- retardation of surface discharge
- water retention during dry periods



Blatenská slat'



Photos I. Bufková

Černohorský močál

Gentle performance without heavy machinery

III. Wet grassland: marginal wetland ecosystem in inundation areas of fishponds and in river floodplains

Ecological studies since 1976 (MaB projects)



“Wet Meadows“ near Třeboň, LTER site: Aboveground biomass and production



Inter-annual variation of seasonal maximum aboveground biomass

in the “Wet Meadows“ sedge-grass marsh

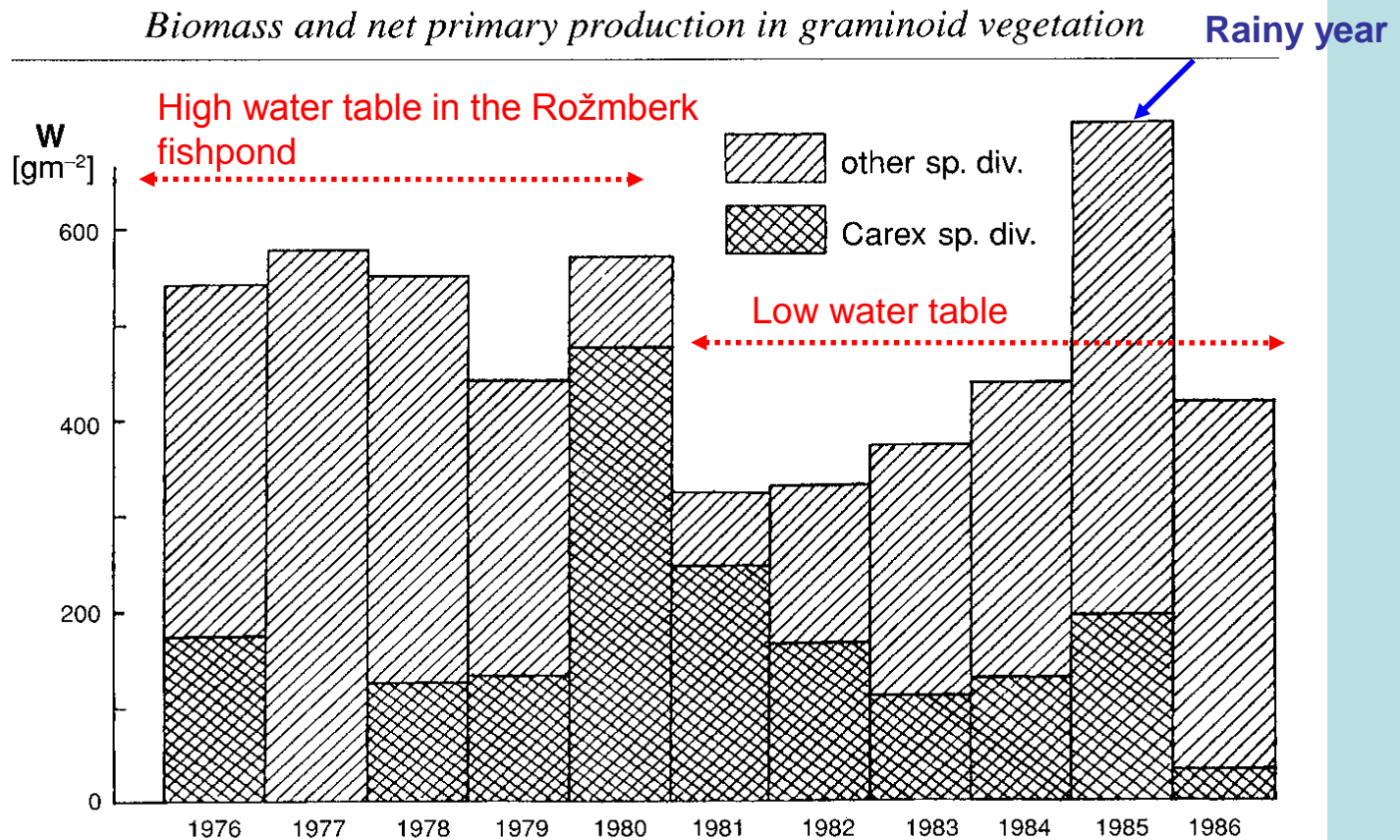


Figure 21.2 Seasonal maximum aboveground biomass, W (g m^{-2} of dry mass) in an unmown stand of a sedge–grass community of the association *Caricetum gracilis* in the Wet Meadows in 11 successive years. The biomass of *Carex* spp. is shown separately, other species are predominantly *Calamagrostis canescens*

**Wetlands Hydrology:
human interference with it should be
cautious, because**

**wetlands play an important role in
local, regional and global water
budgets and hydrological cycles,
especially:**

- **Evapotranspiration of wetlands is nature's powerful air-conditioning tool.**
- **Water retention in wetlands slows down water discharge from catchments and damps water-level fluctuations in both standing and running waters.**

A relatively undisturbed floodplain performs these roles very well !



Photo D. Pithart: Lužnice River
floodplain in the TBBR



**Severely modified
watercourses and
floodplains lose these
beneficial functions**

**Restoration of a more
(near-)natural state
of such a floodplain
is impossible without
great and costly
investments**



„Wet Meadows“, heat balance --
sunny summer day at noon

$$\beta = H/L * E = 0.57$$

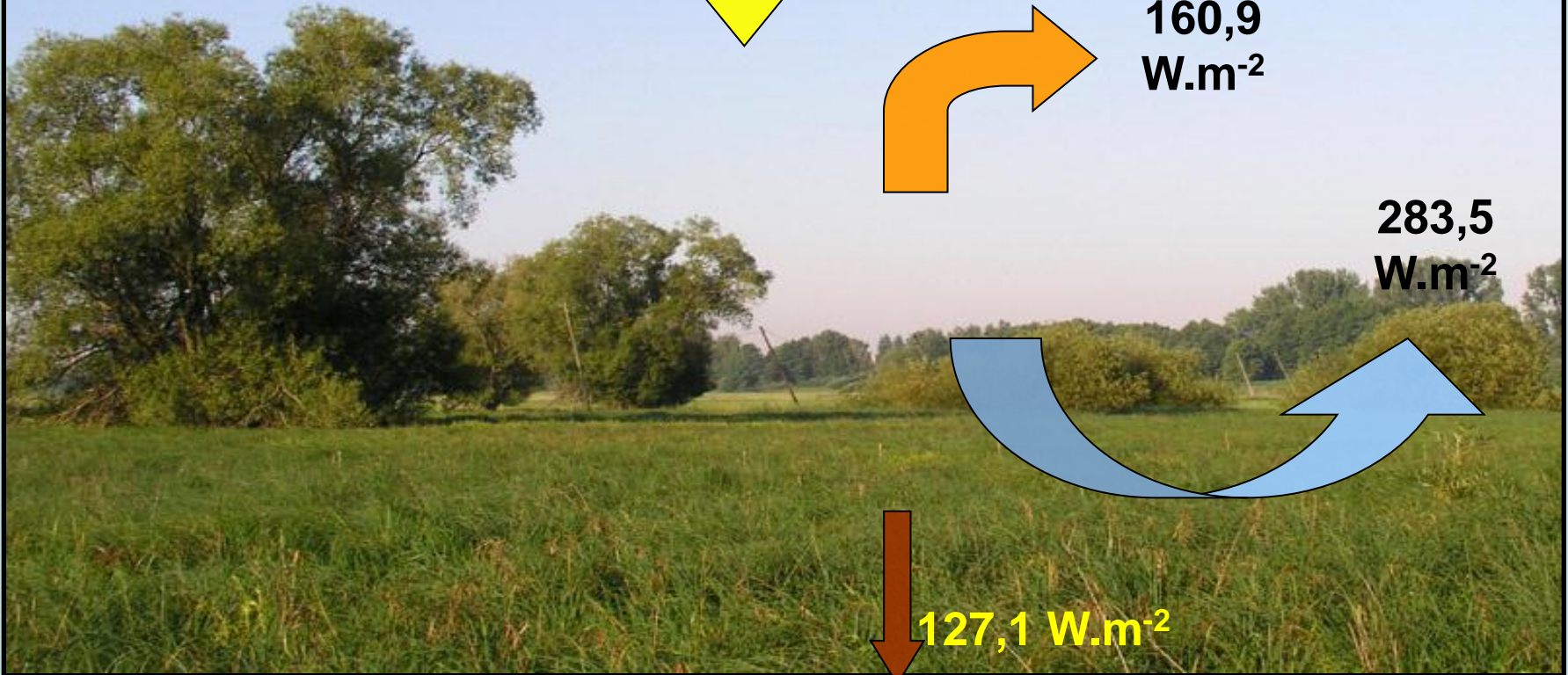
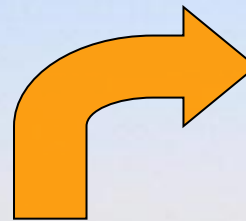
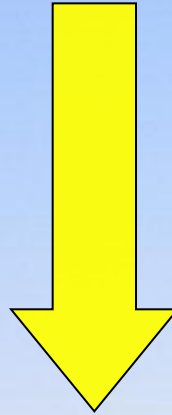
571.5
 W.m^{-2}

18.7.2005 at
12:00 h

160,9
 W.m^{-2}

283,5
 W.m^{-2}

127,1 W.m^{-2}



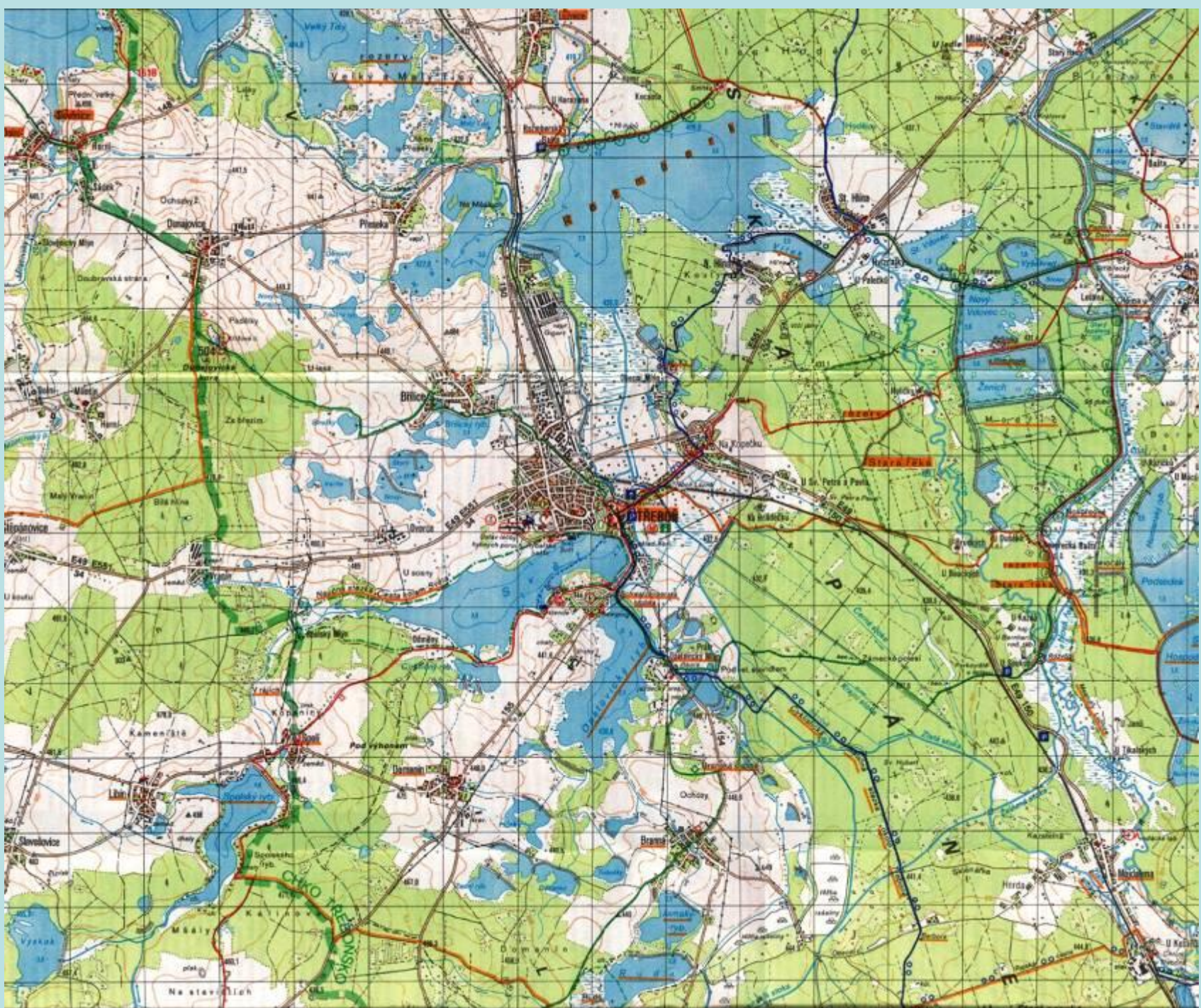
Important role of wetlands: NATURAL FLOOD CONTROL

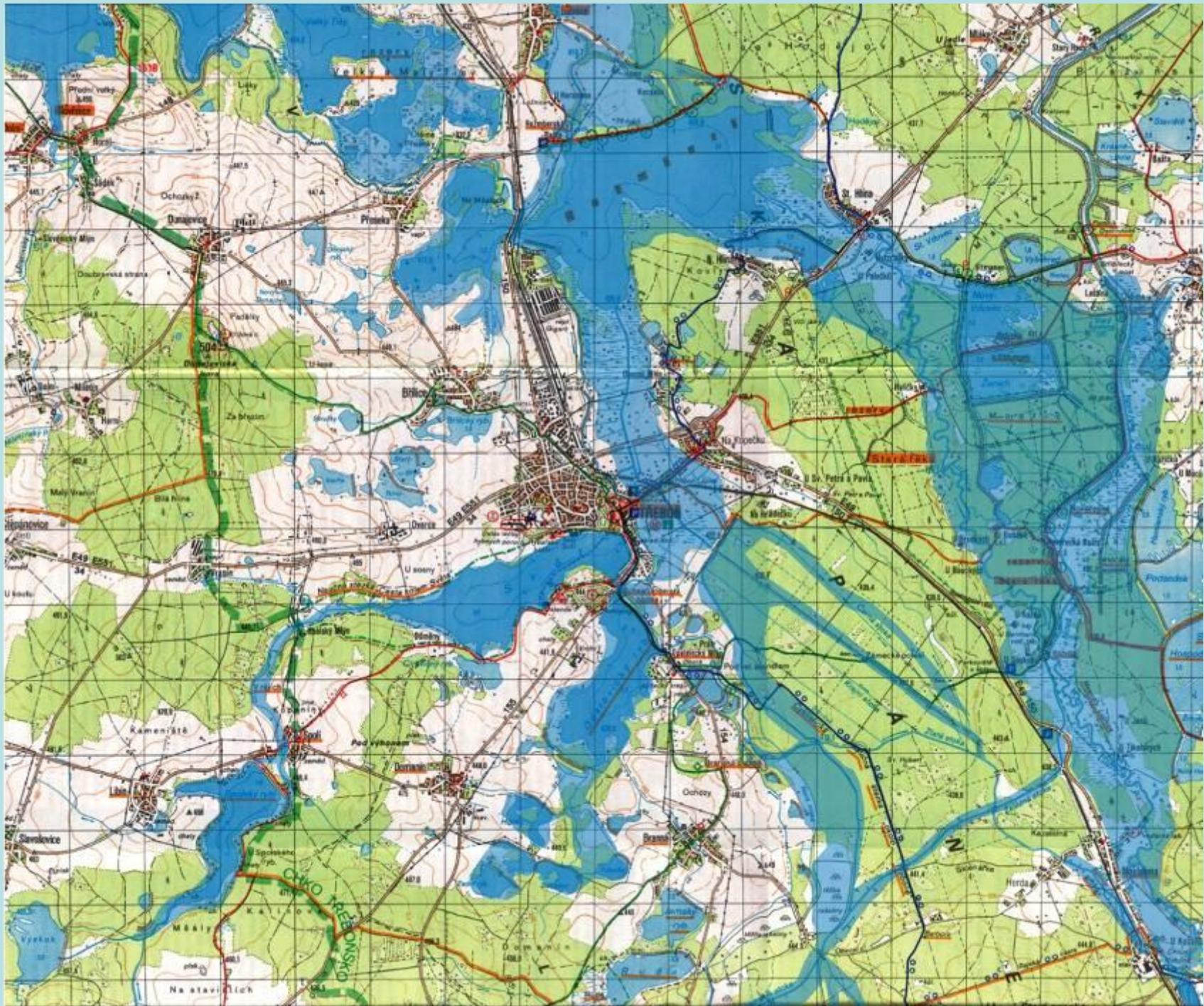
- **Slowing down of run-off, infiltration**
- **Storage capacity for water in the catchment (fishponds, alluvial forests, wet meadows, mires, etc.)**
- **Reduced and delayed water discharge, transformation of flood wave and protection of regions situated downstream**

Water retention in floodplains of rivers and in fishponds, incl. wet grassland:

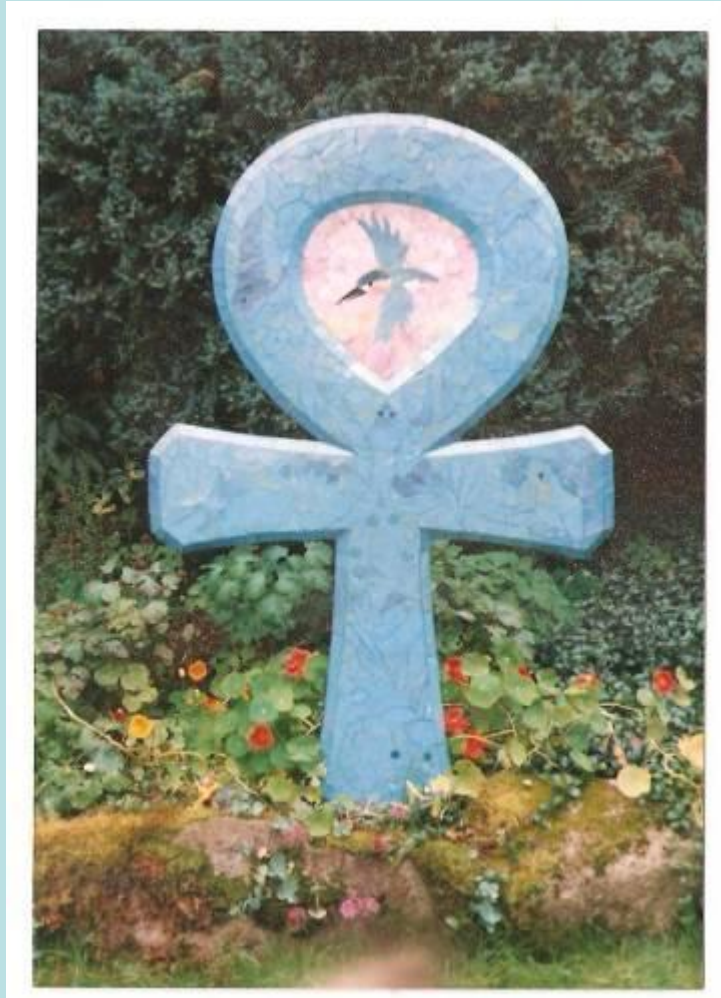
Summer flood in August 2009, similar to that of August 2002: see next two slides:







IV. Question: Wise (=sustainable) use and management of wetlands?



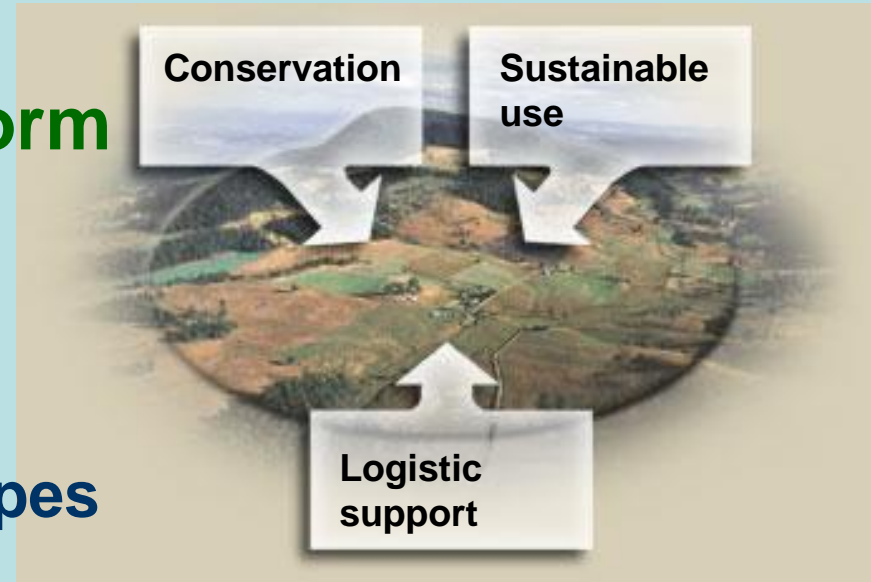
Answer:

Application of the Biosphere Reserves Concept, introduced by and forming part of UNESCO's Man and Biosphere (MaB) Program (started in 1970)

Biosphere Reserves

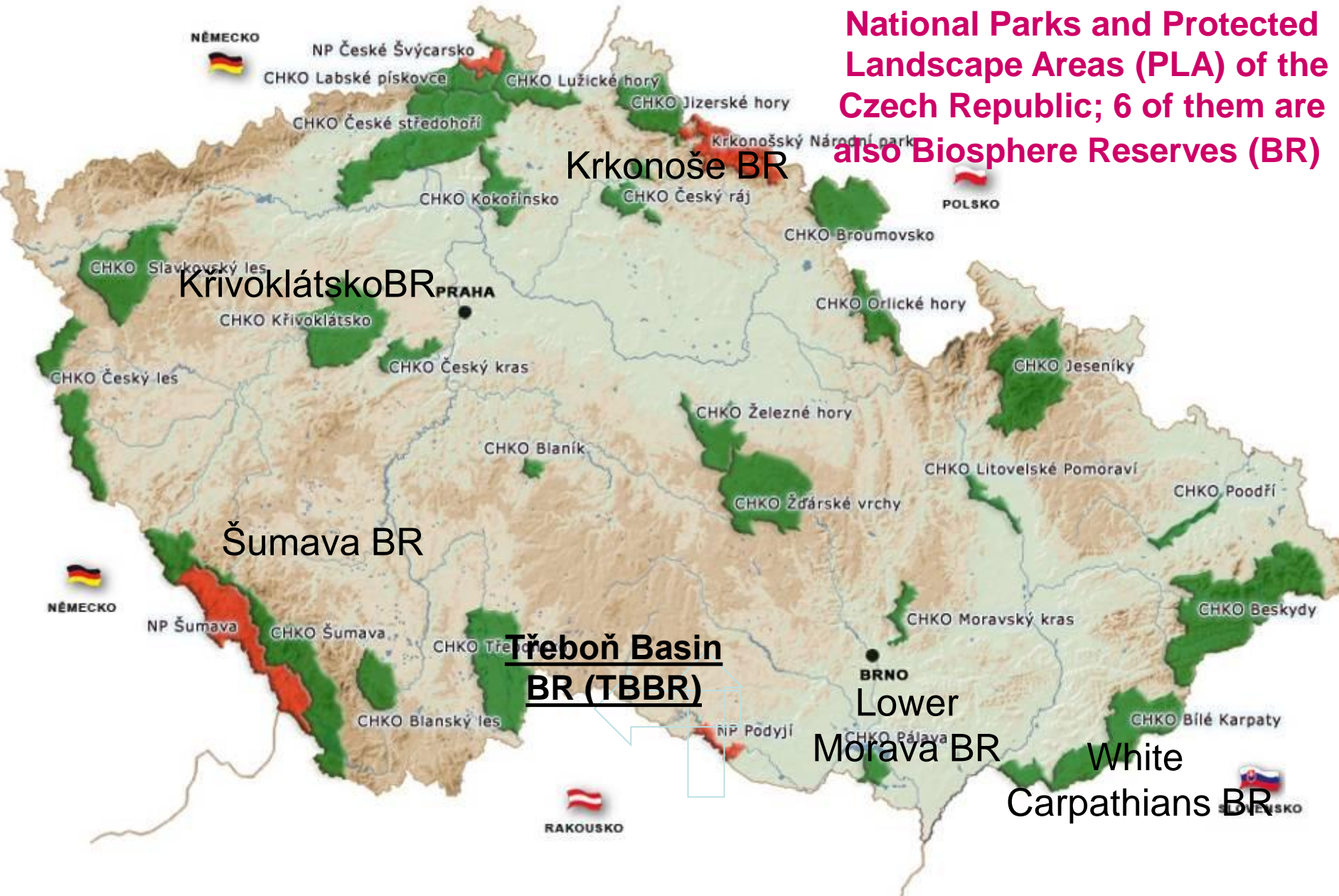
Biosphere reserves perform three main roles:

- ◆ **Conservation *in situ* of natural and semi-natural ecosystems and landscapes**
- ◆ **Demonstration areas for ecologically and socio-culturally sustainable use; and**
- ◆ **Logistic support for research, monitoring, education, training and information exchange**



Národní parky a chráněné krajinné oblasti v České republice

National Parks and Protected Landscape Areas (PLA) of the Czech Republic; 6 of them are also Biosphere Reserves (BR)



Krkonoše BR

Křivoklátsko BR

Šumava BR

Třeboň Basin
BR (TBBR)

Lower
Morava BR

White
Carpathians BR

Ecosystem services of three main TBBR wetland types: fishponds, mires and floodplains

- **“Ecosystem Services“ is an anthropocentric concept which can be understood and correctly explained only within the context of natural processes and the possible human impact on them.**
- **This concept should never be misused against nature, e.g., in the name of short-term profit.**
- **Only healthy structure and functioning of wetland ecosystems provide a basis for their sustainable ecosystems services.**

The role of wetlands with respect to the nature conservation function of the TBBR and “wise use“ of its two Ramsar Sites (RS)

| FUNCTION of the Biosfere Reserve (Trebon Basin) | Wetland 1 FISHPONDS | Wetland 2 MIRES (bogs, fens) | Wetland 3 RIVERINE (floodplain) |
|---|---|---|---|
| NATURE CONSERVATION Biodiversity Habitats, Species | BR Core area 8 nat. reserves Ramsar site potential NATURA 2000 <i>Coelanthus subtilis</i> <i>Haliaeetus albicilla,</i> <i>Sterna hirundo,</i> <i>Luscinia svecica,</i> migratory birds, <i>Lutra lutra</i> | BR Core area 10 nat. reserves Ramsar site potential NATURA 2000 priority peatbog habitats, <i>Liparis loeselii,</i> Invertebrates (glacial relics, endemites) | BR Core area 11 nat. reserves (p.Ramsar site) potential NATURA 2000 priority riverine habitats, molluscs, fishes, dragonflies, <i>Lutra lutra</i> |

Negative impacts on and threats to wetlands in the TBBR and its two RS: “Třeboň Fishponds“ and “T. Mires“

| Trebon Basin Biosphere Reserve | Wetland 1 FISHPONDS | Wetland 2 MIREES (bogs, fens) | Wetland 3 RIVERINE (floodplain) |
|---|---|--|---|
| NEGATIVE IMPACTS, THREATS | High-intensity fish-farming with Carp stock (eutrophication, destruction of littoral stands, reduction of food sources) | Large-scale extraction of peat for agricultural purposes (habitat destruction, drainage) | Large-scale extraction of sand and gravel (habitat destruction, ground water table alter.) Decline of farming |

Use of the BR concept - TBBR example, conclusions:

- The Třeboň Basin Biosphere Reserve (TBBR) implements successfully its three main functions with respect to wetlands and other ecosystems:
- Conservation of valuable both (semi)natural and human-made wetlands, esp. those declared as wetlands of international importance by the Ramsar Convention

Use of the BR concept - TBBR example, conclusions, continued.:

- Logistics incl. research, environmental education, support to “wise“ use of wetlands.
- Sustainable use and development: public relations, contacts with stakeholders – esp. compromises with the fisheries, coordination with requirements of the local authorities, NGO´s, inhabitants and visitors.
- *The BR makes effective use of the fundamental ideas and documents of the MaB program: Statutory Framework of BR´s, Seville Strategy for BR´s (1995), and Madrid Declaration (2008) .*

An aerial photograph of a forest landscape. The foreground and middle ground are dominated by a dense forest of evergreen trees. Interspersed among the trees are several small, dark blue ponds and larger, irregularly shaped areas of brownish, peaty soil, characteristic of wetlands. In the upper right, a larger, more circular pond is visible. The overall scene depicts a natural, undisturbed landscape with significant water saturation.

***Final message:
a landscape without
wetlands is
a landscape without water!***

Photo I. Bufková

Acknowledgements:

- **Administration of the Třeboň Basin PLA/BR:**
especially Miroslav Hátle, Jan Ševčík, Josef Hlásek
and Jiří Bureš
- **Jakub Brom, Ivana Bufková,**
- **Andrea Kučerová, Jiří Dušek, David Pithart,**
- **Richard Faina, Ivo Přikryl,**
- **Štěpán Husák, Richard Lhotský,**
- **Aleš Soukup, Alena Pecháčková,**
- **State Nature Conservancy of the C.R.,**
- **Other sources.**

*Thanks for the use of their photographs and other information and
valuable assistance*

Thank you for your attention!



Photo J. Ševčík

September 2008

WWW.ZE-VZDUCHU.CZ